

# ANDAZ™

AMSTERDAM  
PRINSENGRACHT

T +31 20 523 1234  
F +31 20 523 1235

PRINSENGRACHT 587  
1016 HT, AMSTERDAM, THE NETHERLANDS  
AMSTERDAM.PRINSENGRACHT.ANDAZ.COM  
AMSTERDAM.PRINSENGRACHT@ANDAZ.COM

## ACCOMMODATION

With everything from the whimsical and quirky design by renowned Dutch designer Marcel Wanders to our dynamic meeting spaces and superb location in the lively heart of Amsterdam, our 122-room hotel is an ideal destination for business and leisure travelers alike.

### AMENITIES

complimentary wireless internet // complimentary minibar with non-alcoholic beverages and snacks // impromptu drinks in Andaz lounge and library // unlimited local phone calls // newspaper delivery // upscale local bath products // plush robes and slippers // LCD television // Geneva sound system // iPod docking system // in-room safe

## NEIGHBOURHOOD

**LOCATED** in the charming heart of Amsterdam // within the UNESCO protected rings of canals, on the Prinsengracht // adjacent to the famous Nine Streets and vibrant Jordaan district // culture, shopping, dining and nightlife located within walking distance

**NEAR** Anne Frank House // Rijksmuseum // Van Gogh Museum // Stedelijk Museum // Jordaan district // Leidseplein // Vondelpark // numerous bars, cafés, art galleries and boutiques

## AT YOUR SERVICE

24-hour host // 24-hour in-room dining // 24-hour gym // spa services // dry cleaning & laundry services // currency exchange // special pets program // very important baby program // facilities for physically challenged guests // silent garden // airport transfers & limousine service // valet parking // guest bicycles

## DINING & ENTERTAINMENT

### BLUESPOON RESTAURANT

open show kitchen // uncomplicated European flavors with a Dutch edge // local produce // seasonally inspired // lively atmosphere // chef's table // family style dining // semi-private dining room // Sunday brunch // boat catering

BREAKFAST	6:30 am » 10:30 am
LUNCH	12:00 pm » 3:00 pm
DINNER	6:00 pm » 11:00 pm
SUNDAY BRUNCH	12:00 pm » 3:00 pm

### BLUESPOON BAR

hand-crafted cocktails // inviting, cosmopolitan atmosphere // stunning canal view // distinct Dutch beverages // savory snacks // daily aperitivo // afternoon tea

MONDAY - THURSDAY	12:00 pm » 1:00 am
FRIDAY & SATURDAY	10:00 am » 2:00 am
SUNDAY	10:00 am » 1:00 am

## SOCIAL SPACES

### LOBBY AND LOUNGE

social heart of the hotel // barrier free setting to evoke personalized and uncomplicated service // design elements feature the adventurous observatory, bell-shaped chandeliers, video art installations and artistic wallpaper and carpets

### LIBRARY

place to relax or catch up on work // design reference to the buildings' former function as public library // filled with art & design books // guest laptop // complimentary refreshments & evening wine hour



# ANDAZ™

AMSTERDAM  
PRINSENGRACHT

T +31 20 523 1234  
F +31 20 523 1235

PRINSENGRACHT 587  
1016 HT, AMSTERDAM, THE NETHERLANDS  
AMSTERDAM.PRINSENGRACHT.ANDAZ.COM  
AMSTERDAM.PRINSENGRACHT@ANDAZ.COM

## ROOM DIMENSIONS AND CAPACITIES

### PRINSENGRACHT BUILDING

DELFT BLUE ROOM 5.9 x 7.6 x 2.9 / 20' x 25' x 10'

### KEIZERGRACHT BUILDING

STUDIO 1 19.2 x 8.4 x 2.9 / 63' x 28' x 10'  
GALLERY 13.3 x 6.6 x 2.9 / 50' x 33' x 10'  
STUDIO 2 9.4 x 5.0 x 2.9 / 31' x 16' x 10"  
STUDIO 3 6.0 x 5.0 x 2.9 / 20' x 16' x 10'  
THE ATELIER 13.3 x 11.7 x 3,5 / 37' x 65' x 11,5'

	SQUARE METRES	SQUARE FEET	BANQUET	RECEPTION	CABARET	THEATRE	CLASSROOM	BOARDROOM	SQUARES	U-SHAPE	CRESCENT
DELFT BLUE ROOM	45	495	12	—	—	—	10	—	—	—	—
STUDIO 1	162	1743	80	120	72	140	54	22	80	42	60
GALLERY	87	936	—	80	—	—	—	—	—	—	—
STUDIO 2	47	506	24	30	16	30	—	14	24	—	—
STUDIO 3	30	323	10	—	—	—	8	—	—	—	—
THE ATELIER	155	1668	36	80	24	58	18	18	40	18	24

## SALON SPACES

### ANDAZ STUDIOS

a variety of unique and dynamic spaces that feel more like a home than a meeting space // designed to create engaging and energizing interactions // feature built-in coffee makers, refrigerators, storage spaces and LCD televisions // corporate, private and wedding celebrations // experienced and dedicated events team // natural daylight // Hyatt Gold Passport planner rewards

#### STUDIO 1

space for anything and everything // multi-purpose // dynamic and divisible in setup // transformable with modular furniture and facilities // full length windows overlooking the whimsical silent garden // wall featuring a giant pixelated image of a classic Dutch painting “still life of a flower bouquet” // niche with stained glass impressions // features a series of matryoshka dolls

#### GALLERY

adjacent to Studio 1 // prime break-out space // live cooking station

#### STUDIO 2

smart and elegant setting // bold design with amusing twists on Dutch history // flexible board room table

#### STUDIO 3

warming woods and premium leather set the mood in this space // ideal for smaller gatherings with a professional vibe // sense of formality interrupted by Marcel Wanders’ witty monster chairs

#### THE ATELIER

hotels’ hidden gem // 155<sup>m</sup>2 of residential and creative salon space // private welcome area // view on dazzling observatory // sky light // features built-in beamer and screen, refrigerator, storage space and kitchen counter

#### DELFT BLUE ROOM

typical Dutch inspired room // decadently decorated in Delft Blue, from the carpet to the decorations // features two custom-made chandeliers // garden view // located in Prinsengracht building

# ANDAZ™

AMSTERDAM  
PRINSENGRACHT

T +31 20 523 1234  
F +31 20 523 1235

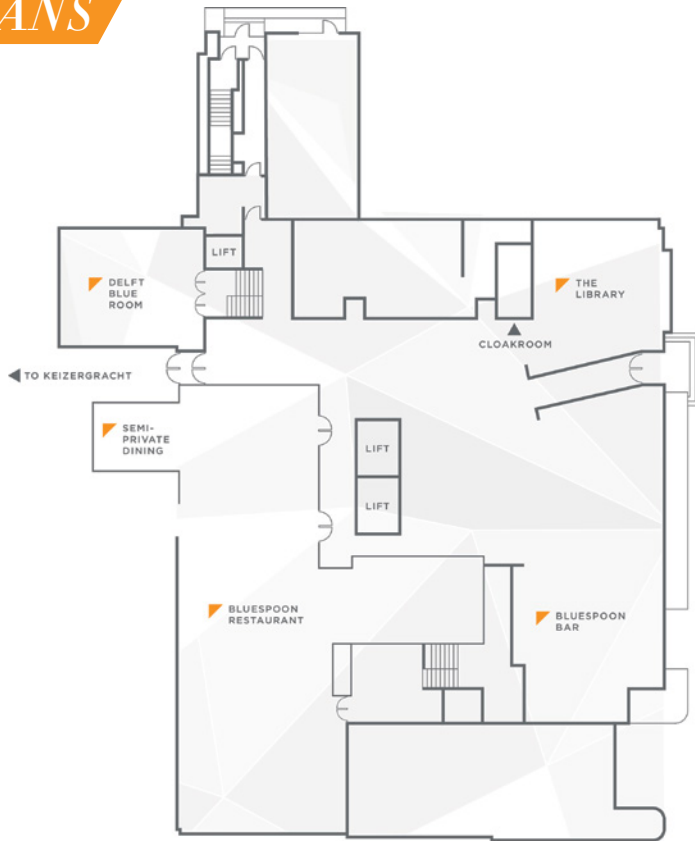
PRINSENGRACHT 587  
1016 HT, AMSTERDAM, THE NETHERLANDS  
AMSTERDAM.PRINSENGRACHT.ANDAZ.COM  
AMSTERDAM.PRINSENGRACHT@ANDAZ.COM



## FLOOR PLANS

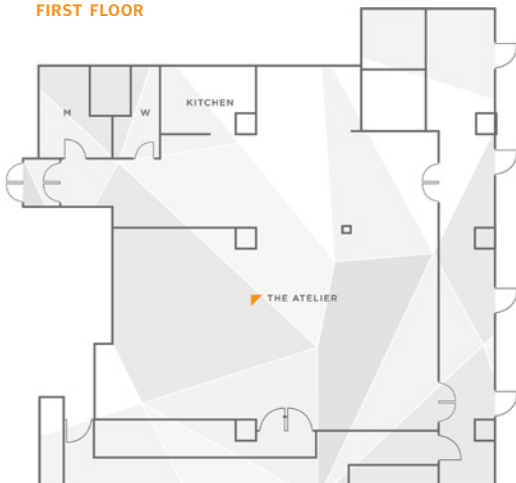
### PRINSENGRACHT

GROUND FLOOR



### KEIZERSGRACHT

FIRST FLOOR



GROUND FLOOR

